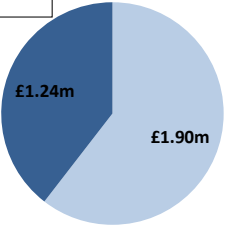


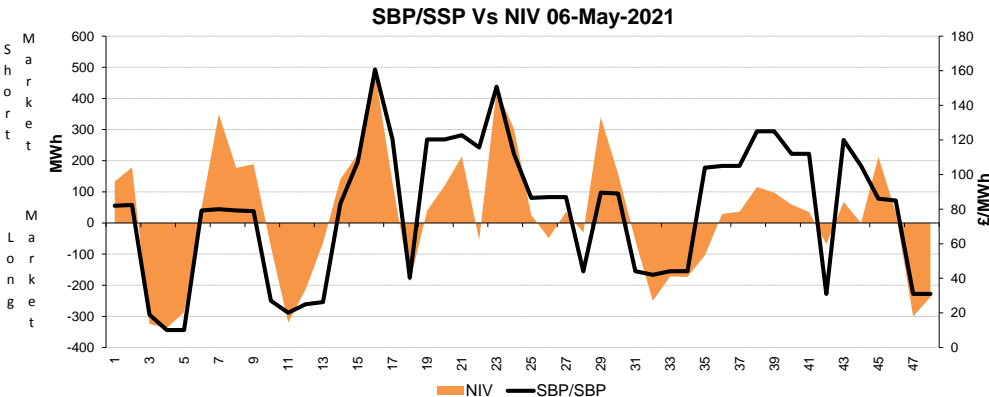
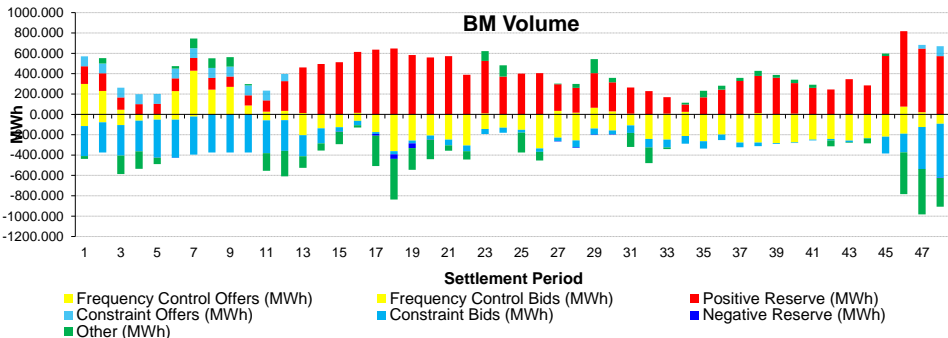
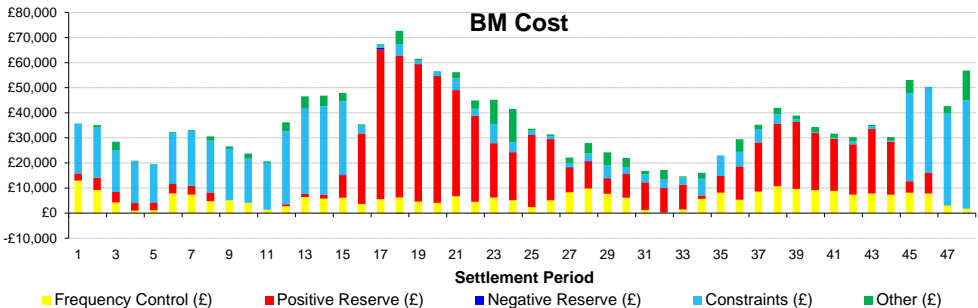
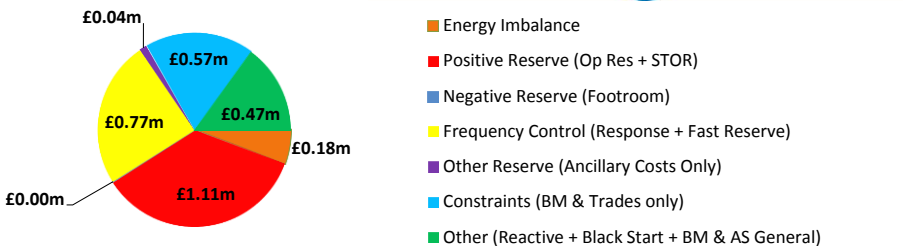
Date: Thursday 06 May 2021

BSUoS Charge Estimate: £2.52/MWh  
Total Outturn: £3.15m

BM Cost (Indicative)  
AS Cost (Estimate)



# Daily Balancing Costs



## Commentary

The market was mostly short from morning to mid afternoon, and over the evening period. 120MW of Non-BM fast Reserve was run over the late afternoon period, and 92MW of STOR was run in the early evening. Overnight Trades and BM Actions for RoCoF. BM Action supported overnight Voltage Control in the Midlands area. BM Action required to alleviate thermal export constraints in the South and Wales areas during the day.

Western Link status: Available